

7 MAINTENANCE

Ceramic capacity depends on water quality. The dirtier the water, the more often you will have to clean the element. The Filter element must be cleaned when the flowrate becomes insufficient, or the pressure relief valve (12) discharges (at 112 lbs p.s.i./8 bar).

Important: Do not adjust the pressure relief valve!

- A) Unfasten wing screws (3).
- B) Lift lid (4) with the ceramic filter (5) and outlet hose out of the filter housing and clean with the abrasive sponge (contained in the inner compartment of the canvas bag), until the natural ceramic colour reappears. Use no other abrasive or scouring agents. Important: Do not boil the filter, nor sterilize it with steam. Do not use an oven or microwave to speed up the drying process.
- C) Clean the filter housing (13) when necessary.
- D) Make sure that the filter element is screwed in tightly (see under ⑥ B). Reassemble the filter. Regularly remove and clean the pressure relief valve (12), to ensure proper function. To open the valve, two 20 mm wrenches are ideal. Grip the inner hexagonal screw firmly with one wrench, while unscrewing the valve-head with the other wrench counter-clock wise. Clean rubber surface and its contact point. Tighten valve-head again. Do not change position of small screw on valve-head. It is used to set the pressure level for the relieve valve to open. Special equipment is needed to check the proper setting.
- E) Protect clean water outlet of the filter element and outlet hose against contamination.

If no water flows after approximately 20 pump strokes, possible causes are:

- inlet hose (7) kinked
- pre filter (8) clogged or in contact with the ground
- screw cap at the upper end of the inlet hose not tightened properly
- piston gasket (14) not lubricated, or defective
- ball in check valve (15) not moving freely

If water squirts out along the piston rod (16), tighten cap nut (17) until the stop firmly, and apply some force to tighten slightly further to press the seal. If still leaking, the piston rod gasket (18) must be replaced.

WARRANTY

2 YEAR LIMITED WARRANTY on Katadyn water filters.

A) What is covered

Your Katadyn water filter is warranted to be free from defects in materials and workmanship.

B) How long warranty coverage lasts

This warranty lasts two years from the date of purchase of your Katadyn water filter. All implied warranties under state law are also limited to two years from the date of purchase. Some states do not allow limitations on how long an implied warranty lasts, so the above limitation may not apply to you.

C) What Katadyn will do

In the event of a defect in material or workmanship within the two-year warranty period, Katadyn will either repair or replace your Katadyn water filter, at Katadyn's sole discretion.

D) What is not covered

This warranty does not cover any damage caused by product misuse, abuse or failure to follow instructions provided herein for proper use, maintenance, cleaning or storage. This warranty also does not cover, and expressly excludes coverage for, any incidental or consequential damages arising out of the purchase, use or performance of the product. Some state laws do not allow exclusion or limitation of incidental or consequential damages, so the above exclusion or limitation may not apply to you.

E) How to get service

To receive coverage under this warranty, please return your Katadyn water filter to the retailer where you purchased the product for repair or replacement. If you are not completely satisfied with the service you receive from your retailer, or if you have any questions regarding this warranty, please contact Katadyn Customer Service at below listing.

F) How state law applies

This warranty gives you specific legal rights. You may also have other rights which vary from state to state.

Contact List:

Katadyn Products Inc.

Pfäffikerstrasse 37, 8310 Kempthal, Switzerland
Phone: +41 44 839 21 11
customerservice@katadyn.ch

Local Katadyn Group customer service contacts:

USA: cs@katadyn.com
Germany: customerservice@katadyn.de

8 FILTER ELEMENT CAPACITY & REPLACEMENT

Ceramic capacity depends on water quality. The dirtier the water, the more often you will have to clean the element. Check the filter element for the minimum diameter (38 mm) with the measuring gauge 100181. If the measuring gauge fits over the ceramic filter without being forced, the filter must be replaced.

Inspect the ceramic for cracks after cleaning, if the filter dropped or was exposed to freezing conditions.

If the filter shows cracks it will no longer protect you from microorganisms.

If the ceramic filter has reached the minimal diameter or is damaged, it must be replaced by a new Katadyn ceramic filter 8018833.

Ensure that the rubber gasket (6) is inserted properly.

9 LONGTERM STORAGE

Should the filter not be used for some time, remove the ceramic filter and clean it as described under ⑦ B).

Remove hose nozzle (10) with outlet hose (11). Open cap nut (17) and remove complete piston rod (16). Disconnect inlet hose (7) from the filter housing (13). Allow all parts to air dry completely in a ventilated room. This will prevent the filter from building up a musty smell. Drying the ceramic filter may take several days. Reassemble and store in carry bag.

Note: When removing unit from long-term storage, flush the system with one liter of water to remove any stale tasting water.

KATADYN®
MAKING WATER DRINKING WATER

Katadyn Expedition

EN



1 INTENDED USE

When used properly in accordance with the instructions provided in this manual, this product is designed to reduce the levels of bacteria and protozoan cysts commonly found in fresh water sources to make it safer for drinking. It meets the U.S. Environmental Protection Agency's microbiological water purifier standards for reduction of bacteria (99.9999% *Klebsiella terrigena*) and protozoan cysts (99.9% *Giardia* and *Cryptosporidium*).

The Katadyn Expedition is designed to be used by small groups in remote areas or during an emergency when treated water is unavailable. It is built from stainless steel and other very durable materials to withstand periods of heavy use.

Water definitions as used in this manual

Fresh/raw water = Untreated water (Lakes, Rivers, Streams, etc.)

Filtered fresh water = Potable drinking water

Treated water = Treated tap water or chemically disinfected water, or boiled disinfected water

2 IMPORTANT SAFETY MESSAGE

READ, UNDERSTAND AND FOLLOW ALL instructions and warnings in this manual before using the Katadyn Expedition. Failure to follow all warnings and instructions may result in exposure to harmful microorganisms and illness.

If there is any risk of viruses in the water, use an EPA-registered disinfectant such as Katadyn Micropur MP1 Purification Tablets, Micropur Forte or Quick (outside USA/Canada), in combination with the Katadyn Expedition. (Note: Follow all instructions for proper use of Micropur MP1, Micropur Forte or Micropur Quick and wait the appropriate treatment time) or boil your water (must bring to a rolling boil for approx. 1 minute) (Note: The Katadyn Expedition does not remove viruses).

3 LIMITED MANUFACTURERS WARNINGS

Using the Katadyn Expedition improperly or drinking untreated water can result in exposure to harmful microorganisms and an increased risk of diseases. Reduce your risk of becoming sick by following the warnings and instructions in this manual. **YOU ARE RESPONSIBLE FOR YOUR OWN SAFETY AND THOSE IN YOUR GROUP. PLEASE USE GOOD JUDGEMENT.**

Read this entire manual before assembling or using the Katadyn Expedition and follow all instructions carefully. If you have any questions, contact us. How to get in touch is listed in this manual or on our website.

- The Katadyn Expedition does not remove viruses.
- Never use the Katadyn Expedition to filter seawater or brackish water or chemically contaminated water, such as water from mine tailing ponds or near large agricultural operations. The Katadyn Expedition does not make drinkable water from these sources and does not remove chemicals and radioactive materials or particles smaller than 0.2 microns.
- Improper threading of the filter to the lid could cause fluid leakage and result in illness.
- Do not allow fresh water to contaminate the output parts (hose).
- Do not drink directly from the output hose.
- Do not filter any substance or liquid other than fresh water through your Katadyn Expedition, or the ceramic filter may become damaged or contaminated.
- Before long term storage, disinfect the ceramic filter thoroughly to prevent growth of mold, mildew and bacteria which could cause illness (see Long Term Storage).
- Always seek the best fresh water source available.

4 KEY COMPONENTS IN SYSTEM

- (1) Clamping Screw
- (2) Support
- (3) Wing Screws
- (4) Lid
- (5) Ceramic Filter
- (6) Gasket
- (7) Inlet Hose
- (8) Pre Filter
- (9) Pump Handles
- (10) Hose Nozzle
- (11) Outlet Hose
- (12) Pressure Relieve Valve
- (13) Filter Housing
- (14) Piston Gasket
- (15) Ball Check Valve
- (16) Piston Rod
- (17) Cap Nut
- (18) Piston Rod Gasket

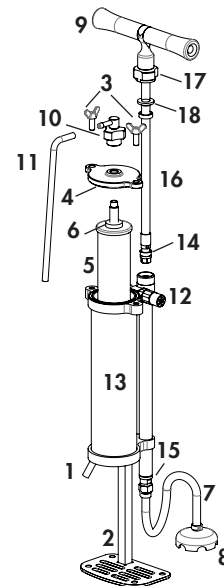


Figure (1) Key Components

5 PRODUCT SETUP

The Katadyn Expedition requires minimal setup. For best results, try out the product before first use and familiarize yourself with its operation.

1. Carefully remove Katadyn Expedition filter from canvas carrying bag.
2. Assemble the Katadyn Expedition as described in 6.
3. Always flush the system before every use by discarding the first liter of water.

6 NORMAL OPERATION

- A) Loosen clamping screw (1) and then adjust pump body to a comfortable height on the support (2).
- B) Unfasten wing screws (3), raise lid (4) with ceramic filter (5) screwed in. Make sure that the filter element is screwed in properly; gasket (6) must seal tightly.
- C) Attach outlet hose (11) to hose nozzle (10).
- D) Immerse inlet hose (7) with pre filter (8) into the raw water.
- E) Start pumping by moving the pump handle (9) up and down. After about 20 pump strokes, the clean, filtered water will start flowing through outlet hose (11).

Important: Be careful not to overtighten, as this may cause a bypass between lid and rubber gasket.

Reassemble Katadyn Expedition filter in reverse.

- Important:**
- Align pump handles (9) away from hose nozzle (10), to avoid striking against it when pumping.
 - To prevent the possibility of cross contamination remove the output hose and store separately in the resealable bag inside the carry bag.